

## Williams Lake Trail #62

*Type: Out & Back*

*Length: 2 miles one-way*

*Difficulty: Novice to Intermediate*

*Elevation Gain: 900 ft.*

*Trail Beginning: 10,200 ft.*

*Trail Ending: 11,100 ft.*

### **Access from Taos:**

Travel approximately 4 miles north on U.S. Hwy. 64 from Taos to the junction of NM State Highway 150, then head east on NM State Highway 150 to Taos Ski Valley. Continue through the ski area parking lot to Twining Road. Follow Twining Road and climb above the village to the designated hiker parking lot, before the Kachina/Bavarian area.

### **Trail Description:**

It is about two miles to Williams Lake which is at an elevation of 11,000 feet. Follow the trail from hiker parking and walk up and under the chairlift. Follow signs for Williams Lake and remain on the old road along the east side of Lake Fork Creek for approximately  $\frac{1}{4}$  mile; you are still on private land. A small sign marks the trail heading into the Wilderness Boundary on your left. The elevation at this point is 10,600 feet. The trail is now located in Engelmann spruce stand and near the upper end opens up into meadowland and scattered rock fields. Williams Lake is a natural lake which does not have fish because it's often too shallow to maintain a fish population. Camping and campfires are not permitted along the lakeshore to prevent damage to soil and water quality. Please select a campsite at least 300 feet from streams, springs, or lakes. Wheeler Peak is on the ridge line east of the lake and can be reached by climbing the slope. Technical rock climbing gear is not needed, but the slope is very steep and very rocky. Several avalanche chutes are apparent along the trail. Winter travelers should be alert to avalanche hazards.

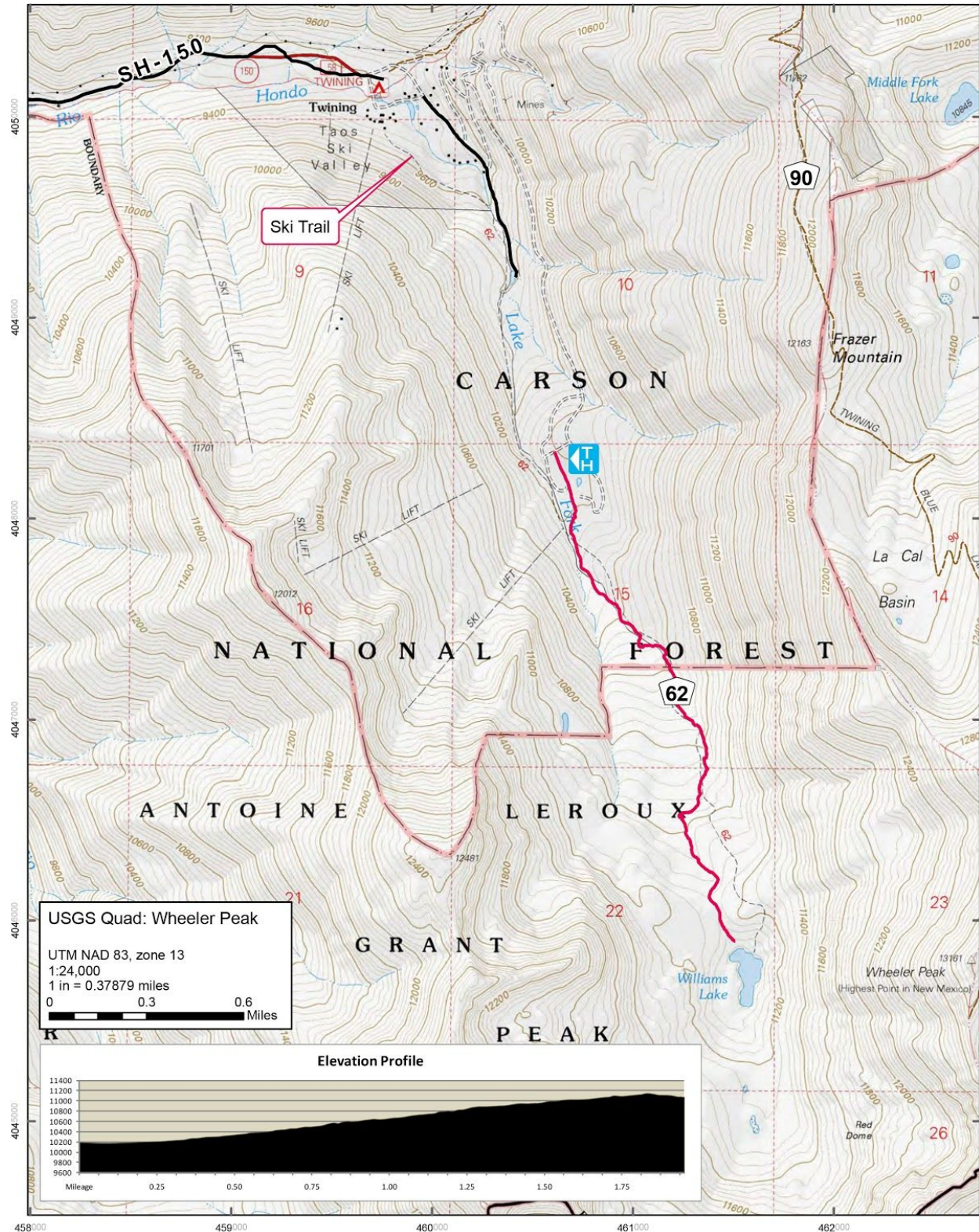
**Visit**

Taos Ski Valley

[www.taosskivalley.com](http://www.taosskivalley.com)

- Roads
- - - Other Trails

# Williams Lake Trail #62



Visit

Taos Ski Valley

[www.taosskivalley.com](http://www.taosskivalley.com)