

## Gavilan Trail #60

*Type: Out & Back*

*Length: 3.3 miles one way*

*Difficulty: Intermediate to Expert*

*Elevation Gain: 2,200 ft.*

*Trail Beginning: 9,000 ft.*

*Trail Ending: 11,200 ft.*

### **Access:**

Located on NM State Highway 150 at mile marker 13, about 1.5 miles east of the Taos Ski Valley parking lot in the Amizette area. The trail borders private land on the east side at the trailhead. Limited parking is available and restricted to the area west of the private land.

### **Trail Description:**

Mixed conifers and aspen groves characterize this 3.3 mile trail located on the south facing slope of the Rio Hondo Canyon. Ruins from old mining operations can be seen along the first half mile of the trail. As the name Gavilan, "Hawk", implies, it ascends quickly, gaining 2,000 feet in elevation. The first section of this trail is difficult, but becomes relatively easier as the trail opens up into meadows and climbs steeply again toward the ridge. Avalanche hazard is a special consideration during the winter and early spring. Day hiking, backpacking, horse riding, as well as backcountry camping is permitted along the entire length of the trail. If you pack it in, please pack it out. Motorized vehicle use is not allowed. This trail provides access to Lobo Peak, Gold Hill, Flag Mountain.

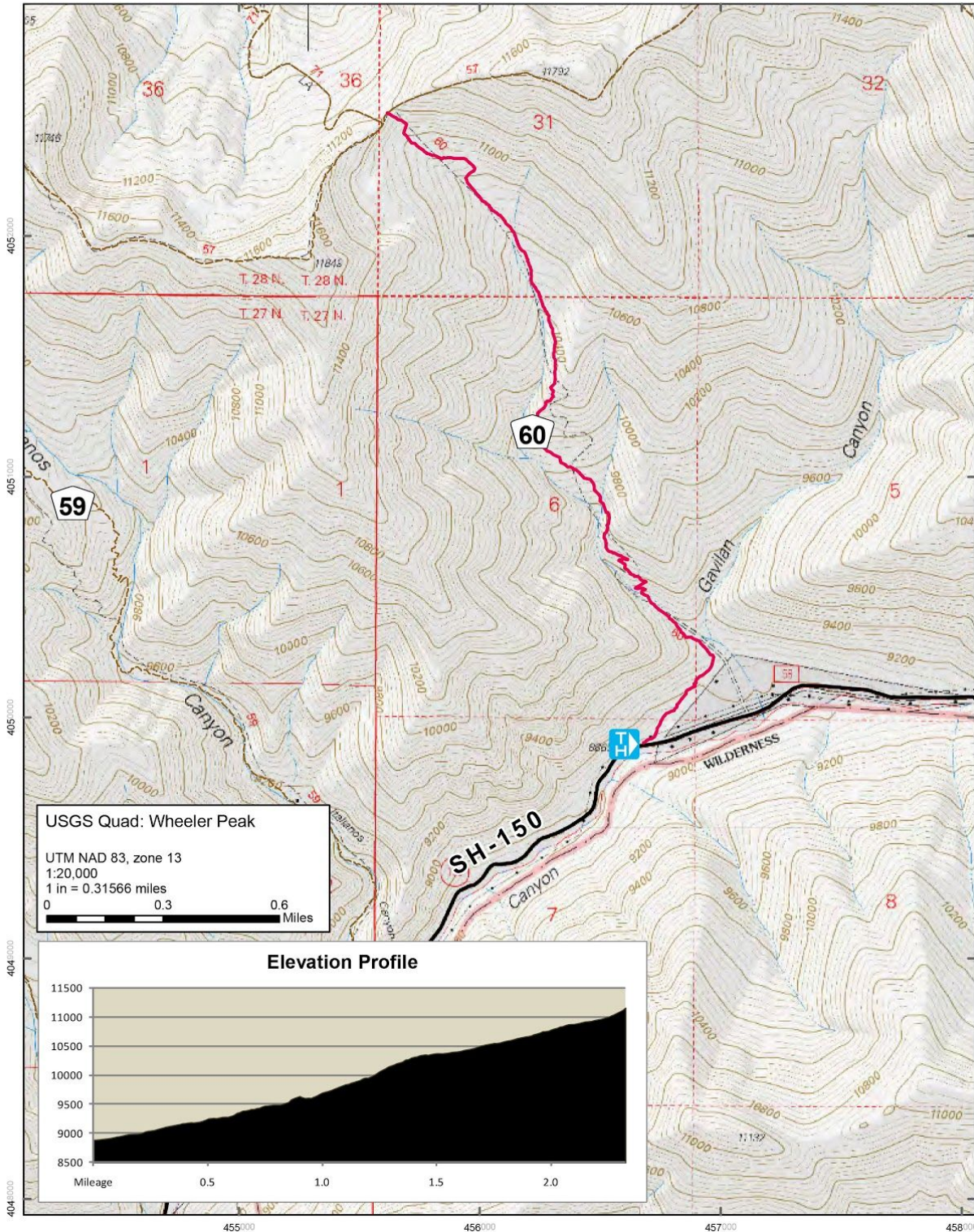
**Visit**

Taos Ski Valley

[www.taosskivalley.com](http://www.taosskivalley.com)

- Roads
- - - Other Trails

## Gavilan Canyon Trail #60



USGS Quad: Wheeler Peak  
 UTM NAD 83, zone 13  
 1:20,000  
 1 in = 0.31566 miles  
 0 0.3 0.6 Miles

